

Farm 12622

Tract 5026

2018 Program Year

T156 R39 S32

Map Created June 05, 2018



Unless otherwise noted:
 Shares are 100% operator
 Crops are non-irrigated
 Corn = yellow for grain
 Soybeans = common soybeans for grain
 · Wheat = HRS, HRW = Grain
 Sunflower = Oil, Non-Oil = Grain
 Oats and Barley = Spring for grain
 Rye = for grain
 Peas = process
 Alfalfa, Mixed Forage AGM, GMA, IGS = for forage
 Beans = Dry Edible
 MAG = for GZ
 Canola = Spring for seed

Alfalfa, Mixed Forage AGM, GMA, IGS = for forage
 Beans = Dry Edible
 MAG = for GZ
 Canola = Spring for seed

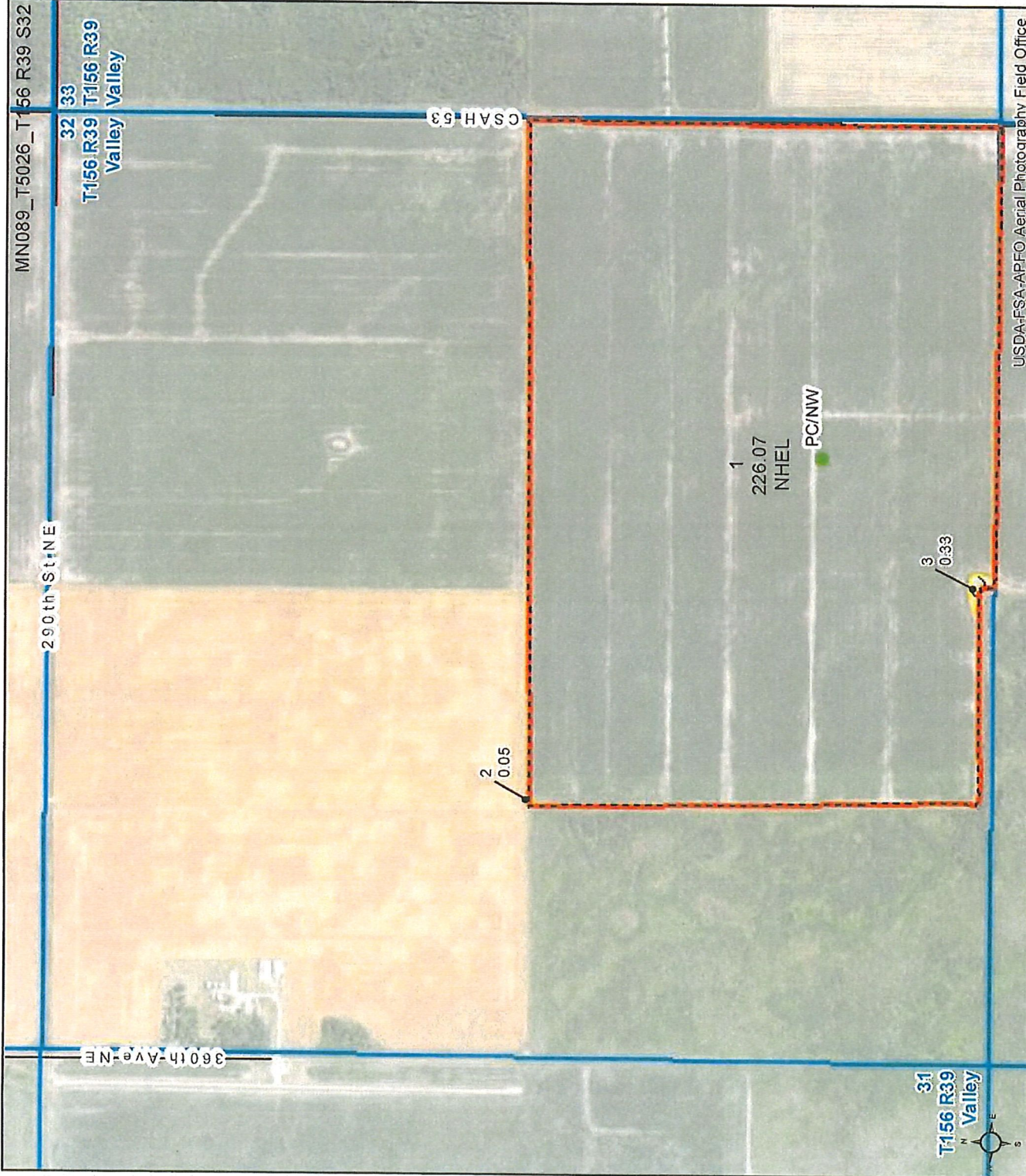
Common Land Unit



Wetland Determination Identifiers



Tract Cropland Total: 226.07 acres



United States Department of Agriculture (USDA) Farm Service Agency (FSA) maps are for FSA Program administration only. This map does not represent a legal survey or reflect actual ownership; rather it depicts the information provided from the producer and/or National Agricultural Imagery Program (NAIP) imagery. The producer accepts the data 'as is' and assumes all risks associated with its use. USDA-FSA assumes no responsibility for actual or consequential damage incurred as a result of any user's reliance on this data outside FSA Programs. Wetland identifiers do not represent the size, shape, or specific determination of the area. Refer to your original determination (CPA-026 and attached maps) for boundaries and determinations or contact USDA Natural Resources Conservation Service (NRCS). This map displays the 2017 NAIP Imagery.



Farm 12622
 Tract 13012

Common Land Unit
 Cropland
 Non-cropland
 CRP

Wetland Determination Identifiers
 Restricted Use
 Limited Restrictions

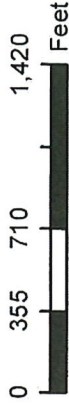
Exempt from Conservation Compliance Provisions



2018 Crop Year

Tract 6 of 8

United States Department of Agriculture (USDA) Farm Service Agency (FSA) maps are for FSA Program administration only. This map does not represent a legal survey or reflect actual ownership; rather it depicts the information provided directly from the producer and/or National Agricultural Imagery Program (NAIP) imagery. The producer accepts the data as is and assumes all risks associated with its use. USDA-FSA assumes no responsibility for actual or consequential damage incurred as a result of any user's reliance on this data outside FSA Programs. Wetland identifiers do not represent the size, shape, or specific determination of the area. Refer to your original determination (CPA-026 and attached maps) for exact boundaries and determinations or contact USDA Natural Resources Conservation Service (NRCS).



Unless otherwise noted:
 Shares are 100% operator
 Crops are non-irrigated
 Corn = yellow for grain
 Soybeans = common soybeans for grain
 Wheat = HRS, HRW = Grain
 Sunflower = Oil, Non-Oil = Grain
 Oats and Barley = Spring for grain
 Rye = for grain
 Peas = process
 Alfalfa, Mixed Forage AGM, GMA, IGS = for forage
 Beans = Dry Edible
 NAG = for GZ
 Canola = Spring for seed

Common Land Unit
 / Non_Cropland
 \ Cropland
 Tract Boundary
 PLSS

Wetland Determination Identifiers
 ● Restricted Use
 ▲ Limited Restrictions
 ■ Exempt from Conservation
 ■ Compliance Provisions

Tract Cropland Total: 38.97 acres



USDA-FSA-APEO Aerial Photography Field Office

United States Department of Agriculture (USDA) Farm Service Agency (FSA) maps are for FSA Program administration only. This map does not represent a legal survey or reflect actual ownership; rather it depicts the information provided from the producer and/or National Agricultural Imagery Program (NAIP) imagery. The producer accepts the data as is and assumes all risks associated with its use. USDA-FSA assumes no responsibility for actual or consequential damage incurred as a result of any user's reliance on this data outside FSA Programs. Wetland identifiers do not represent the size, shape, or specific determination of the area. Refer to your original determination (CPA-026 and attached maps) for boundaries and determinations or contact USDA Natural Resources Conservation Service (NRCS). This map displays the 2017 NAIP Imagery.



Wetland Determination Identifiers

- Restricted Use
- ▲ Limited Restrictions
- Exempt from Conservation Compliance Provisions

Common Land Unit

- Cropland
- Non-cropland
- CRP

Farm 15411
Tract 13011



Tract 5 of 6

2018 Crop Year

Leaflet | Powered by Esri

United States Department of Agriculture (USDA) Farm Service Agency (FSA) maps are for FSA Program administration only. This map does not represent a legal survey or reflect actual ownership. It depicts the information provided directly from the producer and/or National Agricultural Imagery Program (NAIP) imagery. The producer accepts the data 'as is' and assumes all risks associated with its use. USDA-FSA assumes no responsibility for actual or consequential damage incurred as a result of any user's reliance on this data outside FSA Programs. Wetland identifiers do not represent the size, shape, or specific determination of the area. Refer to your original determination (CPA-026 and attached maps) for exact boundaries and determinations or contact USDA Natural Resources Conservation Service (NRCS).

Farm 12622
Tract 5049

2018 Program Year

T155 R39 S5

Map Created June 05, 2018



Unless otherwise noted:

- Shares are 100% operator
- Crops are non-irrigated
- Corn = yellow for grain
- Soybeans = common soybeans for grain
- Wheat = HRS, HRW = Grain
- Sunflower = Oil, Non-Oil = Grain
- Oats and Barley = Spring for grain
- Rye = for grain
- Peas = process
- Alfalfa, Mixed Forage AGM, GMA, IGS = for forage
- Beans = Dry Edible
- NAG = for GZ
- Canola = Spring for seed

Common Land Unit

- Cropland
- Tract Boundary
- PLSS

Wetland Determination Identifiers

- Restricted Use
- Limited Restrictions
- Exempt from Conservation
- Compliance Provisions

Tract Cropland Total: 153.22 acres



USDA-FSA-APFO Aerial Photography Field Office

United States Department of Agriculture (USDA) Farm Service Agency (FSA) maps are for FSA Program administration only. This map does not represent a legal survey or reflect actual ownership; rather it depicts the information provided from the producer and/or National Agricultural Imagery Program (NAIP) imagery. The producer accepts the data 'as is' and assumes all risks associated with its use. USDA-FSA assumes no responsibility for actual or consequential damage incurred as a result of any user's reliance on this data outside FSA Programs. Wetland identifiers do not represent the size, shape, or specific determination of the area. Refer to your original determination (CPA-026 and attached maps) for boundaries and determinations or contact USDA Natural Resources Conservation Service (NRCS). This map displays the 2017 NAIP Imagery.



Unless otherwise noted:
 Shares are 100% operator
 Crops are non-irrigated
 Corn = yellow for grain
 Soybeans = common soybeans for grain
 Wheat = HRS, HRW = Grain
 Sunflower = Oil, Non-Oil = Grain
 Oats and Barley = Spring for grain
 Rye = for grain
 Peas = process
 Alfalfa, Mixed Forage AGM, GMA, IGS = for forage
 Beans = Dry Edible
 NAG = for GZ
 Canola = Spring for seed

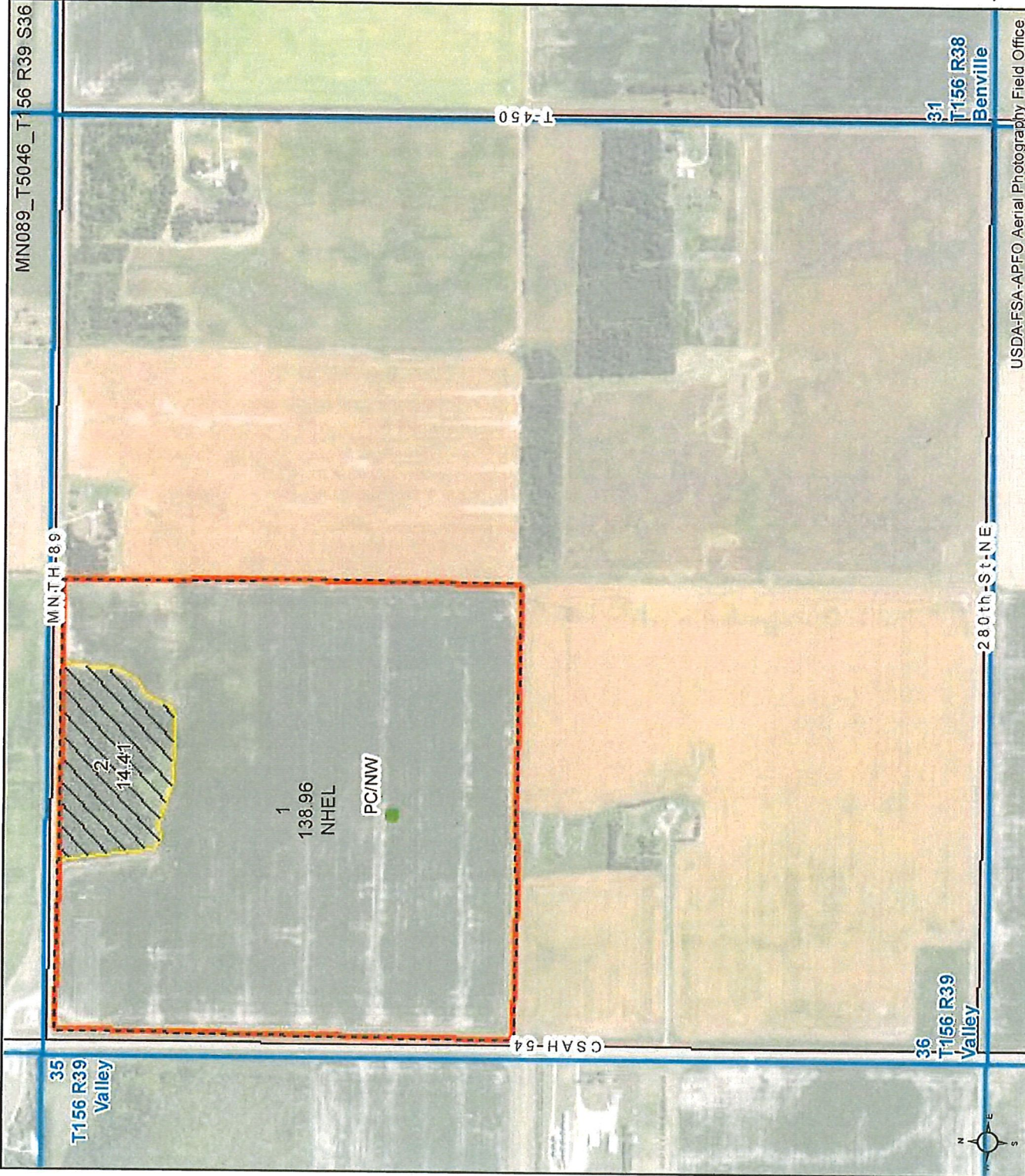
Common Land Unit

- Non_Cropland
- Cropland
- Tract Boundary
- PLSS

Wetland Determination Identifiers

- Restricted Use
- Limited Restrictions
- Exempt from Conservation
- Compliance Provisions

Tract Cropland Total: 138.96 acres



USDA-FSA-AFPO Aerial Photography Field Office

United States Department of Agriculture (USDA) Farm Service Agency (FSA) maps are for FSA Program administration only. This map does not represent a legal survey or reflect actual ownership; rather it depicts the information provided from the producer and/or National Agricultural Imagery Program (NAIP) imagery. The producer accepts the data as is and assumes all risks associated with its use. USDA-FSA assumes no responsibility for actual or consequential damage incurred as a result of any user's reliance on this data outside FSA Programs. Wetland identifiers do not represent the size, shape, or specific determination of the area. Refer to your original determination (CPA-026 and attached maps) for boundaries and determinations or contact USDA Natural Resources Conservation Service (NRCS). This map displays the 2017 NAIP Imagery.



Common Land Unit
 Cropland
 Non-cropland
 CRP

Wetland Determination Identifiers
 Restricted Use
 Limited Restrictions
 Exempt from Conservation Compliance Provisions



Tract 3 of 6

2018 Crop Year

Leaflet | Powered by Esri

United States Department of Agriculture (USDA) Farm Service Agency (FSA) maps are for FSA Program administration only. This map does not represent a legal survey or reflect actual ownership; rather it depicts the information provided directly from the producer and/or National Agricultural Imagery Program (NAIP) imagery. The producer accepts the data as is and assumes all risks associated with its use. USDA-FSA assumes no responsibility for actual or consequential damage incurred as a result of any user's reliance on this data outside FSA Programs. Wetland identifiers do not represent the size, shape, or specific determination of the area. Refer to your original determination (CPA-026 and attached maps) for exact boundaries and determinations or contact USDA Natural Resources Conservation Service (NRCS).

https://intranet-apps.fsa.usda.gov/cars/setUpReports.do?dispatchTo=report&report=fsa578Map&farmNu... 11/27/2018



Unless otherwise noted:
 Shares are 100% operator
 Crops are non-irrigated
 Corn = yellow for grain
 Soybeans = common soybeans for grain
 Wheat = HRS, HRW = Grain
 Sunflower = Oil, Non-Oil = Grain
 Oats and Barley = Spring for grain
 Rye = for grain
 Peas = process
 Alfalfa, Mixed Forage AGM, GMA, ICS = for forage
 Beans = Dry Edible
 NAG = for GZ
 Canola = Spring for seed

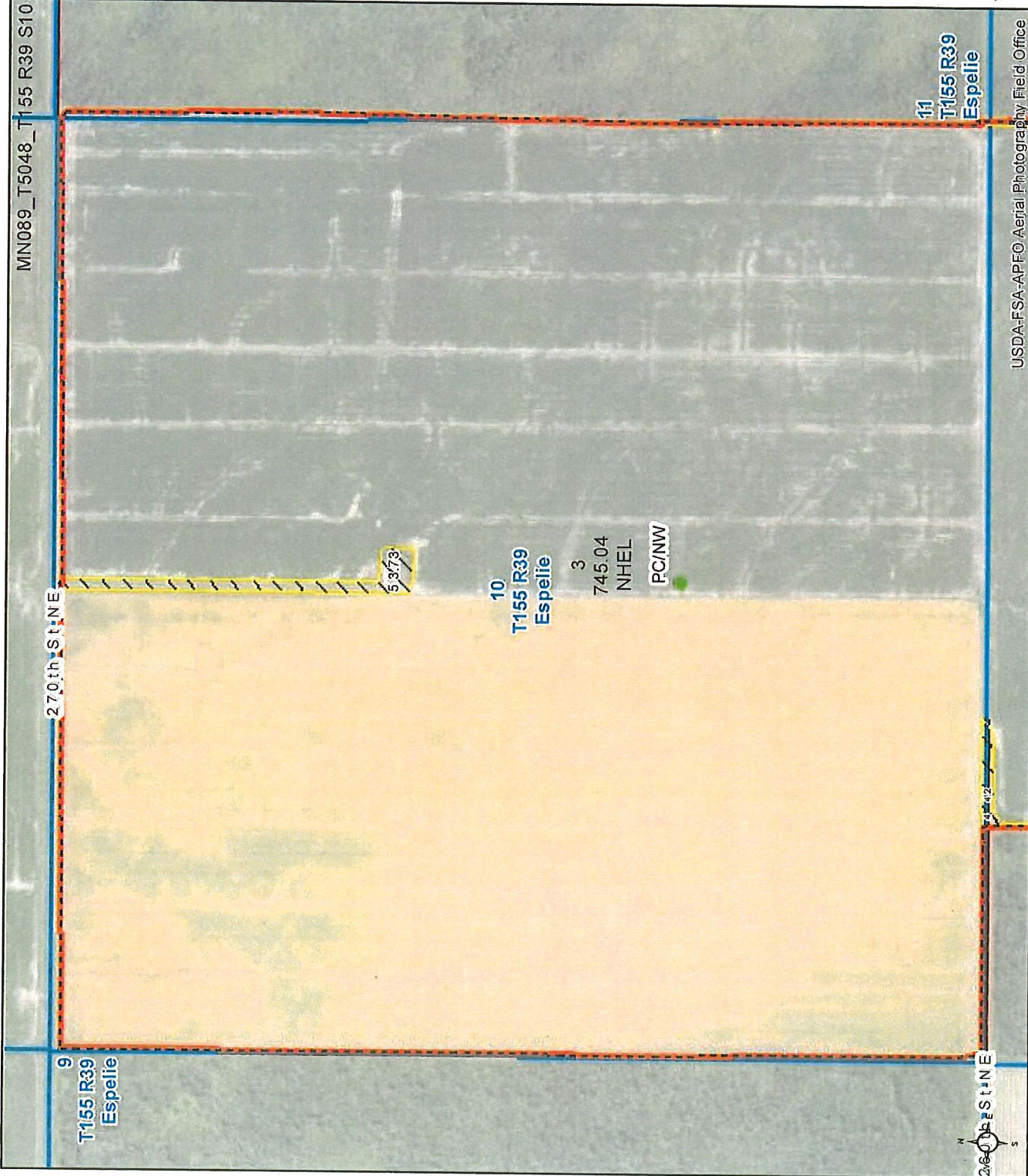
Common Land Unit

- Non_Cropland
- Cropland
- Tract Boundary
- PLSS

Wetland Determination Identifiers

- Restricted Use
- Limited Restrictions
- Exempt from Conservation
- Compliance Provisions

Tract Cropland Total: 745.04 acres



USDA=FSA=APFO Aerial Photography Field Office

United States Department of Agriculture (USDA) Farm Service Agency (FSA) maps are for FSA Program administration only. This map does not represent a legal survey or reflect actual ownership. This map is provided as a service to the producer and/or National Agricultural Imagery Program (NAIP) imagery. The producer accepts the data 'as is' and assumes all risks associated with its use. USDA-FSA assumes no responsibility for actual or consequential damage incurred as a result of any user's reliance on this data outside FSA Programs. Wetland identifiers do not represent the size, shape, or specific determination of the area. Refer to your original determination (CPA-026 and attached maps) for boundaries and determinations or contact USDA Natural Resources Conservation Service (NRCS). This map displays the 2017 NAIP Imagery.



Unless otherwise noted:
 Shares are 100% operator
 Crops are non-irrigated
 Corn = yellow for grain
 Soybeans = common soybeans for grain
 Wheat = HRS, HRW = Grain
 Sunflower = Oil, Non-Oil = Grain
 Oats and Barley = Spring for grain
 Rye = for grain
 Peas = process
 Alfalfa, Mixed Forage AGM, GMA, IGS = for forage
 Beans = Dry Edible
 MAG = for GZ
 Canola = Spring for seed

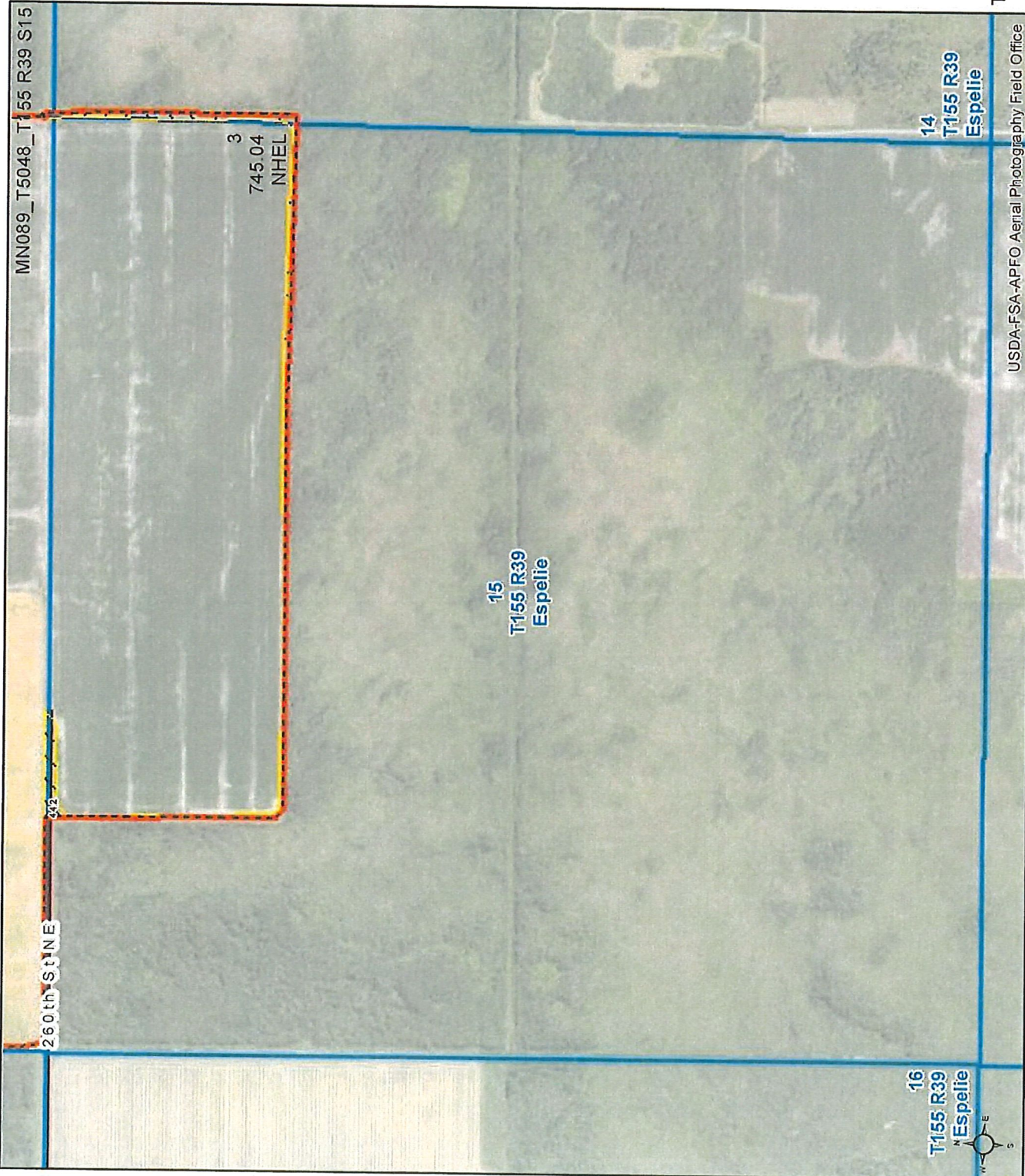
Common Land Unit

- Non_Cropland
- Cropland
- Tract Boundary
- PLSS

Wetland Determination Identifiers

- Restricted Use
- Limited Restrictions
- Exempt from Conservation
- Compliance Provisions

Tract Cropland Total: 745.04 acres



USDA-FSA-APFO Aerial Photography Field Office

United States Department of Agriculture (USDA) Farm Service Agency (FSA) maps are for FSA Program administration only. This map does not represent a legal survey or reflect actual ownership; rather it depicts the information provided from the producer and/or National Agricultural Imagery Program (NAIP) imagery. The producer accepts the data 'as is' and assumes all risks associated with its use. USDA-FSA assumes no responsibility for actual or consequential damage incurred as a result of any user's reliance on this data outside FSA Programs. Wetland identifiers do not represent the size, shape, or specific determination of the area. Refer to your original determination (CPA-026 and attached maps) for boundaries and determinations or contact USDA Natural Resources Conservation Service (NRCS). This map displays the 2017 NAIP Imagery.



- Unless otherwise noted:
 Shares are 100% operator
 Crops are non-irrigated
 Corn = yellow for grain
 Soybeans = common soybeans for grain
 Wheat = HRS, HRW = Grain
 Sunflower = Oil, Non-Oil = Grain
 Oats and Barley = Spring for grain
 Rye = for grain
 Peas = process
 Alfalfa, Mixed Forage AGM, GMA, IGS = for forage
 Beans = Dry Edible
 NAC = for GZ
 Canola = Spring for seed

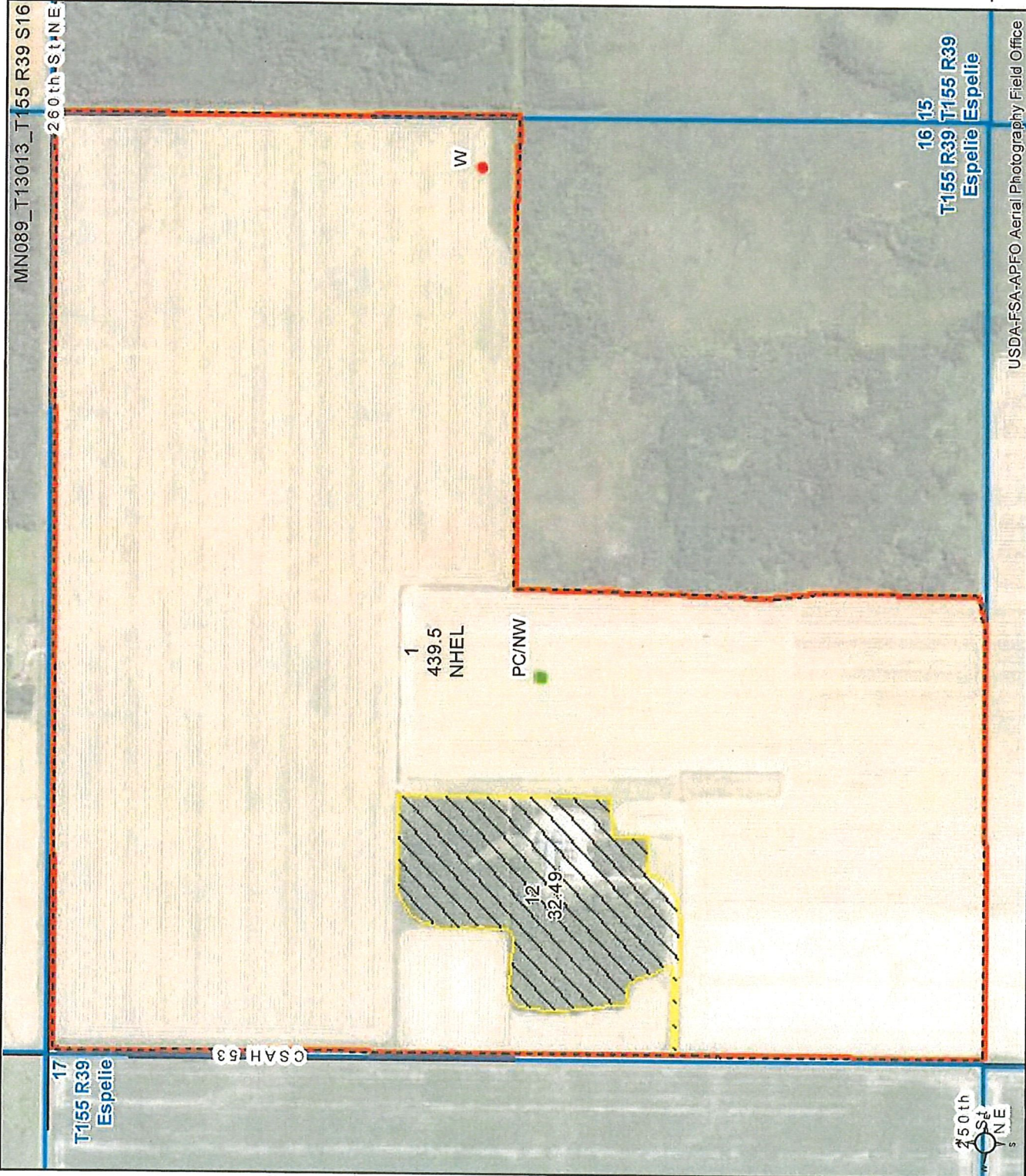
Common Land Unit

- Non_Cropland
- Cropland
- Tract Boundary
- PLSS

Wetland Determination Identifiers

- Restricted Use
- Limited Restrictions
- Exempt from Conservation
- Compliance Provisions

Tract Cropland Total: 439.50 acres



USDA-FSA-APFO Aerial Photography Field Office

United States Department of Agriculture (USDA) Farm Service Agency (FSA) maps are for FSA Program administration only. This map does not represent a legal survey or reflect actual ownership; rather it depicts the information provided from the producer and/or National Agricultural Imagery Program (NAIP) imagery. The producer accepts the data 'as is' and assumes all risks associated with its use. USDA-FSA assumes no responsibility for actual or consequential damage incurred as a result of any user's reliance on this data outside FSA Programs. Wetland identifiers do not represent the size, shape, or specific determination of the area. Refer to your original determination (CPA-026 and attached maps) for boundaries and determinations or contact USDA Natural Resources Conservation Service (NRCS). This map displays the 2017 NAIP Imagery.



- Unless otherwise noted:
 Shares are 100% operator
 Crops are non-irrigated
 Corn = yellow for grain
 Soybeans = common soybeans for grain
 Wheat = HRS, HRW = Grain
 Sunflower = Oil, Non-Oil = Grain
 Oats and Barley = Spring for grain
 Rye = for grain
 Peas = process
 Alfalfa, Mixed Forage AGM, GMA, IGS = for forage
 Beans = Dry Edible
 NAG = for GZ
 Canola = Spring for seed

Common Land Unit

- Non_Cropland
- Cropland
- Tract Boundary
- PLSS

Wetland Determination Identifiers

- Restricted Use
- Limited Restrictions
- Exempt from Conservation
- Compliance Provisions

Tract Cropland Total: 301.53 acres



United States Department of Agriculture (USDA) Farm Service Agency (FSA) maps are for FSA Program administration only. This map does not represent a legal survey or reflect actual ownership; rather it depicts the information provided from the producer and/or National Agricultural Imagery Program (NAIP) imagery. The producer accepts the data 'as is' and assumes all risks associated with its use. USDA-FSA assumes no responsibility for actual or consequential damage incurred as a result of any user's reliance on this data outside FSA Programs. Wetland identifiers do not represent the size, shape, or specific determination of the area. Refer to your original determination (CPA-026 and attached maps) for boundaries and determinations or contact USDA Natural Resources Conservation Service (NRCS). This map displays the 2017 NAIP Imagery.



- Unless otherwise noted:
 Shares are 100% operator
 Crops are non-irrigated
 Corn = yellow for grain
 Soybeans = common soybeans for grain
 Wheat = HRS, HRW = Grain
 Sunflower = Oil, Non-Oil = Grain
 Oats and Barley = Spring for grain
 Rye = for grain
 Peas = process
 Alfalfa, Mixed Forage AGM, GMA, IGS = for forage
 Beans = Dry Edible
 MAC = for GZ
 Canola = Spring for seed

Common Land Unit

- Non_Cropland
- Cropland
- Tract Boundary
- PLSS

Wetland Determination Identifiers

- Restricted Use
- Limited Restrictions
- Exempt from Conservation
- Compliance Provisions

Tract Cropland Total: 77.78 acres



USDA-FSA-APEO Aerial Photography Field Office

United States Department of Agriculture (USDA) Farm Service Agency (FSA) maps are for FSA Program administration only. This map does not represent a legal survey or reflect actual ownership; rather, it depicts the information provided from the producer and/or National Agricultural Imagery Program (NAIP) imagery. The producer accepts the data 'as is' and assumes all risks associated with its use. USDA-FSA assumes no responsibility for actual or consequential damage incurred as a result of any user's reliance on this data outside FSA Programs. Wetland identifiers do not represent the size, shape, or specific determination of the area. Refer to your original determination (CPA-026 and attached maps) for boundaries and determinations or contact USDA Natural Resources Conservation Service (NRCS). This map displays the 2017 NAIP Imagery.

Farm 15411
Tract 13014

2018 Program Year

T155 R39 S20

Map Created June 06, 2018



- Unless otherwise noted:
 Shares are 100% operator
 Crops are non-irrigated
 Corn = yellow for grain
 Soybeans = common soybeans for grain
 Wheat = HRS, HRW = Grain
 Sunflower = Oil, Non-Oil = Grain
 Oats and Barley = Spring for grain
 Rye = for grain
 Peas = process
 Alfalfa, Mixed Forage AGM, GMA, IGS = for forage
 Beans = Dry Edible
 NAG = for GZ
 Canola = Spring for seed

Common Land Unit

- Non_Cropland
- Cropland
- Tract Boundary
- PLSS

Wetland Determination Identifiers

- Restricted Use
- Limited Restrictions
- Exempt from Conservation
- Compliance Provisions

Tract Cropland Total: 245.14 acres



United States Department of Agriculture (USDA) Farm Service Agency (FSA) maps are for FSA Program administration only. This map does not represent a legal survey or reflect actual ownership; rather, it depicts the information provided from the producer and/or National Agricultural Imagery Program (NAIP) imagery. The producer accepts the data 'as is' and assumes all risks associated with its use. USDA-FSA assumes no responsibility for actual or consequential damage incurred as a result of any user's reliance on this data outside FSA Programs. Wetland identifiers do not represent the size, shape, or specific determination of the area. Refer to your original determination (CPA-026 and attached maps) for boundaries and determinations or contact USDA Natural Resources Conservation Service (NRCS). This map displays the 2017 NAIP Imagery.



Farm 12622
 Tract 13015

Common Land Unit
 Cropland
 Non-cropland
 CRP

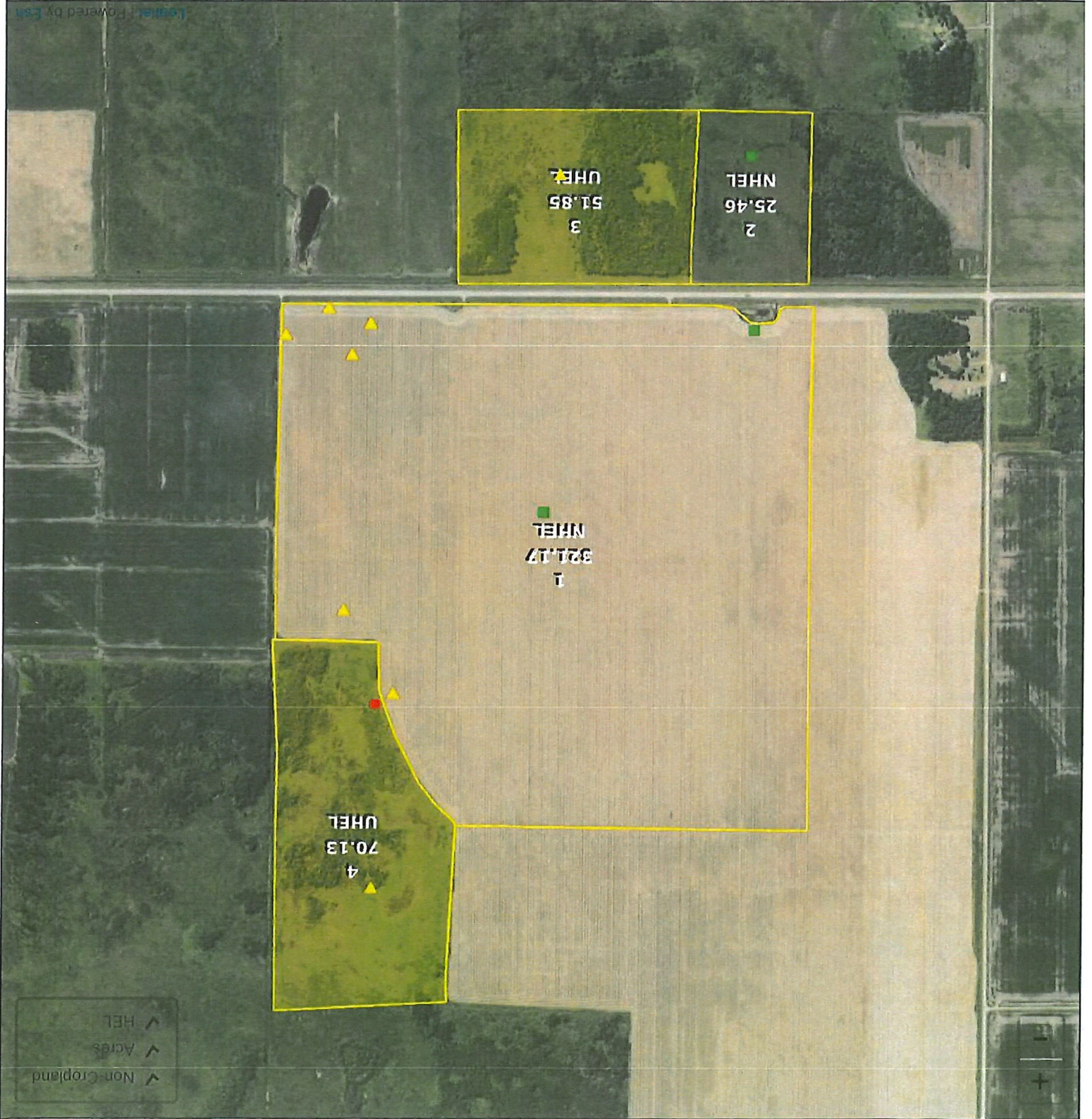
Wetland Determination Identifiers
 Restricted Use
 Limited Restrictions
 Exempt from Conservation Compliance Provisions



Tract 8 of 8

2018 Crop Year

United States Department of Agriculture (USDA) Farm Service Agency (FSA) maps are for FSA Program administration only. This map does not represent a legal survey or reflect actual ownership. rather it depicts the information provided directly from the producer and/or National Agricultural Imagery Program (NAIP) imagery. The producer accepts the data as is and assumes all risks associated with its use. USDA-FSA assumes no responsibility for actual or consequential damage incurred as a result of any user's reliance on this data outside FSA Programs. Wetland identifiers do not represent the size, shape, or specific determination of the area. Refer to your original determination (CPA-026 and attached maps) for exact boundaries and determinations or contact USDA Natural Resources Conservation Service (NRCS).



Farm 12622
 Tract 4578

Wetland Determination Identifiers

Exempt from Conservation Compliance Provisions

Limited Restrictions

Restricted Use

Common Land Unit
 Cropland
 Non-cropland
 CRP

2018 Crop Year



Tract 3 of 8

United States Department of Agriculture (USDA) Farm Service Agency (FSA) maps are for FSA Program administration only. This map does not represent a legal survey or reflect actual ownership. It depicts the information provided directly from the producer and/or National Agricultural Imagery Program (NAIP) imagery. The producer accepts the data as is and assumes all risks associated with its use. USDA-FSA assumes no responsibility for actual or consequential damage incurred as a result of any user's reliance on this data outside FSA Programs. Wetland identifiers do not represent the size, shape, or specific determination of the area. Refer to your original determination (CPA-026 and attached maps) for exact boundaries and determinations or contact USDA Natural Resources Conservation Service (NRCS).

https://intranet-apps.fsa.usda.gov/cars/setupReports.do?dispatchTo=report&report=fsa578Map&farmNu... 11/27/2018